



# Digital Water Level Recorder (P)



This is a Micro controller based Digital Water Level Recorder (Pressure type) reflect state of the art in micro controller based instrumentation design. The Water Level sensor can be attached with this data logger for the collection of real time data automatically. The micro controller has its internal memory along with an additional 128K EEprom, a real time clock with an LCD (16 X 2) to display the instrument status. Piezo-resistive silicon strain gauge, bounded to 316 SS diaphragm and integral cable contain a vent tube for Barometric pressure compensation. Comes with different ranges 10, 35, 100, 200, 300 meters. Data file is saved in Microsoft's Excel. This instrument is used for ground / wells water level monitoring. This instrument also use full for Open channel, Dam and Lake level monitoring.

## Features:

Sensor Input - Pressure type submersible water level sensor. Available in different measurement ranges.

Measured Parameter – Date, Time, Instantaneous Water Level, Maximum Water Level (Log Rate),

Minimum Water Level (Log Rate)

Accuracy:  $\pm 5\text{mm}$  or 0.5% FSO, Unattended recording of Water Level. Virtually maintenance free.

LCD (16 X 2) to display the instrument status, Suitable for mounting in a variety of locations.

User Programmable Logging Interval from 1 min to 24 Hour

User-friendly Virtualware application software, Data retrieval by pocket size data shuttle to your computer (USB Port)

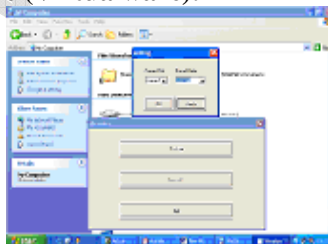
Operating Temperature:  $-20$  to  $70$  °C. Operating Humidity: 0 to 95 % non-condensing.

Memory range more than 16000 data sets (extendable to more at extra cost), Membrane Keyboard is provided for on site programming without help of computer. Comes with weatherproof enclosure

Rechargeable SMF batteries with integral solar panel, which will easily keep the batteries charged.

Data Retrieval options: The standard Weather Station Comes with data retrieval option through Data Shuttle. But you can also choose following data retrieval options – Thought Telephone Line Modem / GSM Modem At Extra Cost.

## Application Software (Virtualware):



Virtualware is a user-friendly, Menu Driven, Windows based system software allows you to view & save collected data. Data file is saved in Microsoft's Excel format.

**Data Download Options:** You can choose any one option given below, for data download from Water Level Recorder to your computer.

## Data Shuttle:



The data shuttle is a pocket-sized device that can be used to download & transport the data from Water Level Recorder to a computer (USB Port), allowing the instrument to stay in place for continuous monitoring/recording. The shuttle connects to a PC and is used with the “Virtualware” to download data.

## Ethernet LAN :



Through Ethernet LAN to Computer. You can enter IP Address of your computer and connect to the Water Level Recorder. You can also get instantaneous data just press Monitor Menu. Used with the “Virtualware” software to download data.

## GSM/GPRS Modem:



The GSM/GPRS Modem is a standard RS232 port based GSM modem to receive data on the PC side which sent by the logger end. This Modem works with Virtual GSM Ware Software to encoded information into database & finally into a presentable MS-Excel Report. A communication cable, Power Adopter & Antenna is shipped along with the modem. This modem too requires GSM SIM cards to function.

### You can also connect following sensors with Ground

#### Water level monitoring system :

Air Temperature & Relative Humidity Sensor  
Wind Speed Sensor  
Wind Direction Sensor  
Rain Fall Sensor  
Water temperature Sensor  
Soil Temperature Sensor  
Air pressure sensor (Barometer)  
Hydrostatic Submersible Level Sensor  
Evaporation Sensor  
Snow Gauge ( Snow Water Equivalent) Sensor  
Ultrasonic Snow Depth Sensor

Leaf Wetness Sensor  
Soil Moisture Sensor  
Electronic Tensiometer  
Solar Radiation Sensor (Pyranometer)  
Solar Radiation Sensor(Silicon Pyranometer)  
Ultra Violet Sensor  
Quantum Sensor  
IR Pyranometer Sensor  
Line quantum Sensor  
Passive Cloud Cover Sensor  
Fog Sensor  
Visibility Sensor  
Infrared remote Temperature Sensor

Factory: 1105/1, Salempur Rajputana Industrial Estate, Roorkee – 247667

District - Haridwar (Uttarakhand) India

Telefax: +91-1332-266186, Cell: +91-9412072697

Email: virtualroorkee@yahoo.com; vsp\_roorkee@yahoo.com

Web: www.virtualweb.co.in

Hydrology, Meteorology, Forestry, Agro-Meterology, Scientific & Soil Testing Equipments.

जल, मौसम, कृषि, वन, मृदा विज्ञान एवं अन्य वैज्ञानिक उपकरण