



Virtual Electronics Company  
वरचूअल इलैक्ट्रॉनिक्स कम्पनी

# Digital Evaporation Recorder



Digital Evaporation recorder used for monitoring of water evaporation comes with a weather proof enclosure which contains the data logger power supply, Sensors and comes complete with a solar panel & Pan .The system is powered by two rechargeable sealed maintenance free batteries with integral solar panel, which will easily keep the batteries charged throughout the year. The Evaporation sensor can be attached with this data logger for the collection of real time data automatically. The micro controller has its internal memory along with an additional 128K EEprom, a real time clock with an LCD (16 X 2) to display the instrument status. Data file is saved in Microsoft's Excel.

## Features & Specifications:

Measured Parameter – Date, Time, Evaporation, Water Temperature, Wind Speed

LCD (16 X 2) to display the instrument status, Suitable for mounting in a variety of locations.

User Programmable Logging Interval from 1 min to 24 Hour

User-friendly Virtualware application software, Data retrieval by pocket size data shuttle to your computer (USB Port)

Operating Temperature: -20 to 70 °C. Operating Humidity: 0 to 95 % non-condensing.

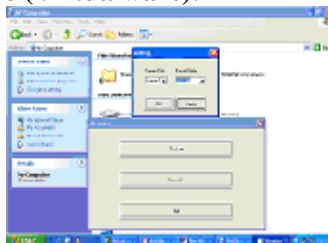
Memory range more than 16000 data sets (extendable to more at extra cost), Membrane Keyboard is provided for on site programming without help of computer. Comes with weatherproof enclosure

Rechargeable SMF batteries with integral solar panel, which will easily keep the batteries charged.

Water Temperature Sensor: Range: - 40 to 124 ° C, Wind Speed Sensor: Range: 0 to 67 m/s, Open Pan: Pan Size: 1220 cm, Material: GI Painted, Mounting: Timber Frame, Pan bird gauge: Square Steel mesh

Data Retrieval options: The standard Weather Station Comes with data retrieval option through Data Shuttle. But you can also choose following data retrieval options – Thought Telephone Line Modem / GSM Modem At Extra Cost.

## Application Software (Virtualware):



Virtualware is a user-friendly, Menu Driven, Windows based software allows you to view & save collected data. Data file is saved in Microsoft's Excel format.

**Data Download Options:** You can choose any one option given below, for data download from Ground Water Level Recorder to your computer.

**Data Shuttle:**



The data shuttle is a pocket-sized device that can be used to download & transport the data from Ground Water Level Recorder to a computer (USB Port), allowing the instrument to stay in place for continuous monitoring/recording. The shuttle connects to a PC and is used with the “Virtualware” to download data.

**Ethernet LAN :**



Through Ethernet LAN to Computer. You can enter IP Address of your computer and connect to the Ground Water Level Recorder. You can also get instantaneous data just press Monitor Menu. Used with the “Virtualware” software to download data.

**GSM/GPRS Modem:**



The GSM/GPRS Modem is a standard RS232 port based GSM modem to receive data on the PC side which sent by the logger end. This Modem works with Virtual GSM Ware Software to encoded information into database & finally into a presentable MS-Excel Report. A communication cable, Power Adopter & Antenna is shipped along with the modem. This modem too requires GSM SIM cards to function.

Factory: 1105/1, Salempur Rajputana Industrial Estate, Roorkee – 247667  
District - Haridwar (Uttarakhand) India  
Telefax: +91-1332-266186, Cell: +91-9412072697  
Email: virtualroorkee@yahoo.com; vsp\_roorkee@yahoo.com  
Web: www.virtualweb.co.in

Hydrology, Meteorology, Forestry, Agro-Meterology, Scientific & Soil Testing Equipments.

जल, मौसम, कृषि, वन, मृदा विज्ञान एवं अन्य वैज्ञानिक उपकरण