



Ground Water Level Recorder



This is a Micro controller based Ground Water Level Recorder reflect state of the art in micro controller based instrumentation design. The Water Level sensor can be attached with this data logger for the collection of real time data automatically. The micro controller has its internal memory along with an additional 2 GB Memory. Piezo-resistive silicon strain gauge, bounded to 316 SS diaphragm and integral cable contain a vent tube for Barometric pressure compensation. Comes with different ranges 10, 35, 100, 200, 300 meters. Data file is saved in Microsoft's Excel. This instrument is used for ground / wells water level monitoring. This instrument also use full for Open channel, Dam and Lake level monitoring.

Features & Specifications:

Sensor Type: Vented Gauge Pressure Sensor (4 to 20 mA)

Memory: 2GB Non-Volatile Flash

PC Interface: USB 2.0 with GUI based software for Data D/L & configuration

Real Time Clock: Internal with accuracy of +/- 2 minutes /year & leap year compensation

Processor: 16 bit Extreme Low Power

Logging Interval: 1 min to 24 hrs

Repeatability: ± 5 counts

Accuracy: $\pm 0.1\%$

ADC Resolution: 16+ bits

Battery Life: 10,000 Readings / 2 Years (whichever is earlier)

Battery: 4 D type Cells (1.5V Each)

Battery Monitoring: Internal with Recording

Operating Humidity 0 to 95% non-condensing

Operating Temperature: - 35 to 70 °C

GSM Interface Optional with SMS Reporting

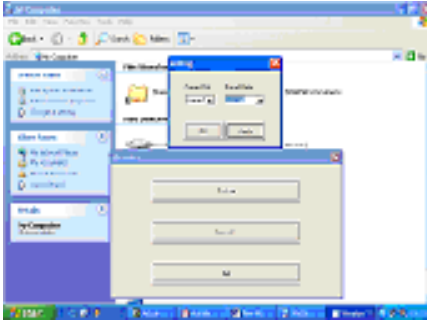
Operating Temperature -10 to 50°C

Data Output Format MS- Excel

Rechargeable SMF batteries with integral solar panel, which will easily keep the batteries charged.

Data Retrieval options: The standard system Comes with data retrieval option through USB Port. But you can also choose GSM Modem option At Extra Cost.

Application Software (Virtualware):



Virtualware is a user-friendly, Menu Driven, Windows based weather station's software allows you to view & save collected data. Data file is saved in Microsoft's Excel format.

Data Download Options:

- (1) **On USB Port:** This is the standard and default download option with this system.
- (2) **GSM/GPRS Modem:**



The GSM/GPRS Modem is a standard RS232 port based GSM modem to receive data on the PC side which sent by the logger end. This Modem works with Virtual GSM Ware Software to encoded information into database & finally into a presentable MS-Excel Report. A communication cable, Power Adopter & Antenna is shipped along with the modem. This modem too requires GSM SIM cards to function. Solar Panel and External battery is required with this option (This is not a default option and will cost you Extra)

Factory: 1105/1, Salempur Rajputana Industrial Estate, Roorkee – 247667

District - Haridwar (Uttarakhand) India

Telefax: +91-1332-266186, Cell: +91-9412072697

Email: virtualroorkee@yahoo.com; vsp_roorkee@yahoo.com

Web: www.virtualweb.co.in

Hydrology, Meteorology, Forestry, Agro-Meterology, Scientific & Soil Testing Equipments.

जल, मौसम, कृषि, वन, मृदा विज्ञान एवं अन्य वैज्ञानिक उपकरण